

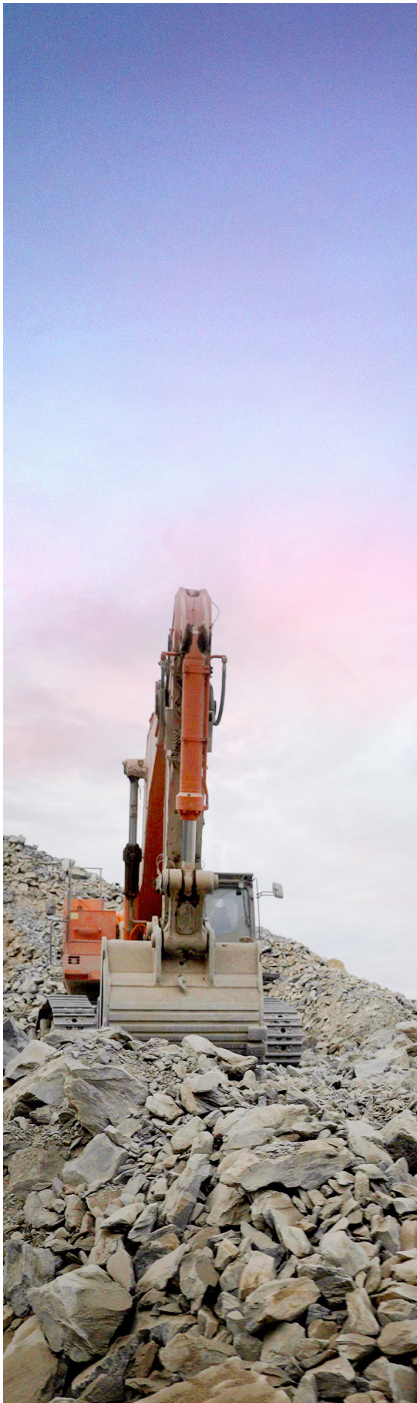


HALLETT RESOURCES

CAPABILITY STATEMENT



Contents



1. Introduction	3
Safety	4
Environment	5
Accreditation	6
2. McLaren Vale Quarries	7
3. Kulpara Quarry	10
4. Truro Quarry	13
5. Construction Sands	15
6. Dry Creek Recycling	17
7. Hallett Transport	19

1. Introduction



Head quartered at Dry Creek, Hallett Group is a \$400+ million turnover business which is the largest integrated building supplies and construction material company in South Australia. Our size and diversity give us an advantage in having a broad range of expertise to provide a balanced outcome for any project. We are well invested with the flexibility and agility to respond quickly and efficiently to any challenge or opportunity.

As part of our continual improvement process, Hallett Group have recently invested \$80+ million into their business. The investment has been in major quarry plant upgrades and acquisitions, new EML's, new concrete trucks, new transport fleet, mobile concrete plant capability, fixed Wet Batch concrete plant (first in SA) and a new NATA accredited laboratory. In addition, Hallett have recruited the best people from the Industry and can boast leading technical and operational expertise.

Hallett's corporate vision is **'be the dominant construction materials, mining materials and building products partner in South Australia and grow our business in attractive markets and industries'**. This has resulted in our positive market reputation that is based on our values and business philosophy of:

Customer Focused: We are a partner that goes above and beyond to delight our customers and add real value, well beyond just our product offerings.

Agile Innovative & Fastest: We will be at the forefront of technology and innovation; we will be the fastest and most adaptive to identify, realise and seize opportunity.

Respect and Integrity: We will behave with professionalism and considered regard toward our internal and external stakeholders, fostering a diverse environment promoting candid constructive communication and ideas.

Business Excellence: We have a continual improvement mindset, we constantly evaluate ourselves and our business looking for ways to improve our safety, our sustainability, our service, our processes and most importantly our people.

Safety

Embedding a Safety Culture into our workplaces has been critical to the success and sustainability of our Operations.

The safety and well being of our employees and Subcontractors is our number one priority. Safety is embedded in our values, our culture and operating systems. In recognition of the importance of our Safety Culture, Hallett developed a suite of Outcome Based Safety Culture measures. These are used to benchmark cultural safety both internally and for the performance of Contractors and Subcontractors.

Our people and associates are very important to us. We are committed to continuous monitoring and enforcement to ensure compliance with all relevant legislation, codes of practice and Australian Standards.

We have developed a very robust Safety Management System (SMS) that incorporates the principles of continuous improvement and ensures health and safety is an integral feature of our business operations and culture.

Our SMS complies with the WHS Act, WHS regulations and relevant codes and is certified to OHSAS 1800 and ISO 45001.

For the Project, we will ensure that:

- All site personnel will be trained and assessed on all required SOP's and company policies. Electronic copies of records will be available upon request
- All plant and equipment comply with Australian Standards
- A programmable tasks register will operate for the site covering all inspection, test and tag and planned maintenance activities
- We will be meeting all the guidelines presented by the main contractor on their safety requirements
- We will conduct a workplace inspection every 6 months in accordance with the safety guidelines set by the main contractor

Environment



2014 Award for Environmental Innovation Excellence presented to CEO Kane Salisbury by Martin Hamilton-Smith MP



2015 Award for Environmental Innovation Excellence presented to CEO Kane Salisbury by Minister for Transport and Infrastructure Stephen Mulligan



2016 Award for Environmental Innovation excellence presented to CEO Kane Salisbury by Chris Picton MP



2019 Award for Bulk Handling Facility of the Year presented to GM Jimmy Baltidis

We acknowledge a responsibility to the environment and we are committed in implementing practices which will promote environmental sustainability.

All our facilities are EPA licensed and we have long standing excellent relationships with those governing and regulatory bodies.

Hallett Group have recognized that in order to mitigate the effects and impact on the Environment by their operations, it is necessary to constantly review and improve on work practices and processes, adopt innovative ideas and re-invest in assets and technology.

Our commitment to environmental excellence has been recognised by the Cement, Concrete & Aggregates Australia (CCA) association where we have won the South Australia award for 'Environmental Innovation Excellence' on the back of our industry leading efforts consecutively from 2014 to 2016 and in 2019. We received the High Commendation CCAA Award in 2018 - Community Involvement re "Mates in Construction". In 2021 we were awarded the Environmental Innovation Award for our Mile End Wet batch Concrete Plant - Closed Circuit Waste Management System. We also received the 2021 Premier's Award under the Commendation Resources Sector for our Closed Circuit Waste Management System. This year we received the Innovation Award for the new Sustainable Products & Services category for our Hallett Low Carbon Mix Design (Environconstruct - DIT).



2022 Award for Sustainable Products & Services of the Year presented to GM Jimmy Baltidis

Accreditation

With continued emphasis on quality and ongoing commitment to our customers, employees and teaming partners, the businesses are certified to the following International and Australian Standards:

- ISO 9001 - Quality
- ISO 14001 - Environmental
- OHSAS 18001 & ISO 45001 - Occupational Health & Safety





**MCLAREN
VALE
QUARRIES**

2. McLaren Vale Quarries

At the McLaren Vale Quarry, the quality of the deposit and the plant investment coupled with the technical knowledge and scale of the MSP Group ensure superior material quality and consistency outcomes.

McLaren Vale Quarries produce materials to DPTI, SA Water and Australian standards (AS1379). We also offer the flexibility to tailor our products to meet specific customer requirements.

In addition to the new fixed plant, the quarry operates additional crushing and pug mill equipment, allowing the flexibility in supplying a wide range of additional products to meet the customer's needs.

Quality

McLaren Vale Quarry employ a dedicated team member to undertake daily production testing of products to ensure products are produced to the customer's specifications. In addition to this, all of Hallett Resources McLaren Vale Quarry product compliance and certification testing is carried out by NATA certified laboratories and sampling is carried out by trained and competent testers.

Resources and Geology

In recent years there has been significant development at the quarry to further expand the operating pit and develop new areas of the quarry to take advantage of the stone reserves on site which exceed 50 million tonnes. Concept plans have been formulated with the long-term quarry design produced by industry experts to efficiently extract and utilise the known reserves.

The McLaren Vale Quarry is a dolomite quarry, with Brighton Limestone as the major rock source and areas of overburden siltstone which is part of the Angepena Formation. Due to the geology of the source rock, the quarry produces products with excellent Strength and Durability for use in the manufacture of Concrete, Asphalt and Pavements.

2. McLaren Vale Quarries (cont)

Methodology and Program

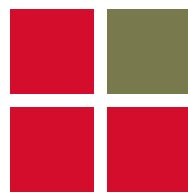
Following on from the successful Quarry material supply to the Gateway South Darlington project, McLaren Vale Quarries is ideally situated to not only meet the demands of any project but to raise the bar for best practice in the supply of its premium, locally sourced aggregate and pavement materials.

McLaren Vale Quarries will strive to achieve the following objectives.

1. Zero injuries to any employee, contractor or visitor
2. Industry leading environmental targets
3. No community impact noticeable above surrounding activities
4. Plant availability at >99% available and delivery service levels at >98% on time
5. Premium materials – in specification
6. Fixed plant capacity of 750t/hour, with additional capacity and redundancy available from mobile crushing plant.

Key Attributes

- CJ612 Sandvik Jaw crusher
- CH550M Sandvik Cone Crusher
- CS660 Sandvik Cone Crusher
- B9100SE Metso Barmac VSI Crusher
- 750t / hr crushing plant capacity - dependent on product
- 20 minutes from project site travelling on the Southern Expressway
- Crushing times 6.00am to 6.00pm Monday to Saturday
- Material deliveries 6.00am to 10.00pm Monday to Saturday
- Fleet of modern trucks and experienced Subcontractors to deliver
- 10% of PM1/20 QG for total project currently held in stock
- 15% of PM2/20 QG for total project currently held in stock
- Additional production capability by utilising mobile crushing equipment and highly skilled staff



**KULPARA
QUARRY**

3. Kulpara Quarry

At Kulpara Quarry, the quality of the deposit and coupled with the technical knowledge and scale of the MSP Group, ensure superior material quality and consistency outcomes. This has enabled us to achieve Australian Standards (AS1379) plus prequalification status with DPTI (road-base materials) and SA Water. We also offer the flexibility to tailor our products to meet specific customer requirements and internal specs set by the quarries Technical Manager.

Kulpara Quarry offers the full range of products for civil, construction and domestic purposes. In addition to the fixed plant, the Quarry operates an additional mobile crushing plant and pug mill.

The Kulpara Quarry represents a significant strategic investment in the long term future of the region. This asset is well placed to service the entire Yorke Peninsula, down into Northern Adelaide and up into the Mid North and Northern Areas of South Australia. We are a dedicated employer of local people and are passionate about exceeding environmental and community expectations.

With a strong commitment to safety, operational and technical excellence, Hallett Resources - Kulpara Quarry is a business with the agility and capability to add value to any project.

Quality

Kulpara Quarry employ trained and competent personnel to carry out sampling of raw material produced. Products are tested by Hallett laboratory which is a NATA certified laboratory. The quarries Technical Manager is responsible for issuing NATA reports to verify compliance of material produced to relevant specifications.

Resources and Geology

In recent years there has been significant development at the quarry to further expand the operating pit and develop new areas of the quarry to take advantage of the stone reserves on site which exceed 20 years at current production capacity. Concept plans have been formulated with the long term quarry design produced by industry experts to efficiently extract and utilise the known reserves.

3. Kulpara Quarry (cont)

The geology of the deposit consists of a high-quality dolomite and limestone deposit and a separate quartzite deposit. The rock masses are moderately to highly fractured resulting in a highly broken shot rock product. This means we are able to achieve excellent rock shape across all our product lines. Excellent strength and durability of the product allows for use in the manufacture of Concrete and Pavement materials.

Methodology and Program

Following on from the successful Quarry material supplies to Yorke Peninsula Council, Kulpara Quarry is ideally situated to not only meet the demands of the project but to raise the bar for best practice in the supply of its premium, locally sourced Aggregate and pavement materials.

Kulpara Quarry will strive to achieve the following objectives:

1. Zero injuries to any employee, contractor or visitor
2. Industry leading environmental targets
3. No community impact noticeable above surrounding activities
4. Plant availability at >99% available and delivery service levels at >98% on time
5. Premium materials – in specification
6. Fixed plant capacity of 350t/hour, with additional capacity and redundancy available from mobile crushing plant as required

Key Attributes

- 24 Hour Crushing capacity
- 350t / hr crushing plant capacity
- All Fill and Sand currently in stock based on project estimations
- Fleet of modern trucks and local experienced Subcontractors to deliver
- A number of heavy loaders and excavators
- Additional production capability available



**HALLETT
RESOURCES
TRURO**

4. Truro Quarry

At the Truro Quarry, the quality of the deposit with the technical knowledge and scale of the MSP Group ensure superior material quality and consistency outcomes.

Truro Quarry produce materials to DPTI, SA Water and Australian standards (AS1379). We also offer the flexibility to tailor our products to meet specific customer requirements.

We are currently in the planning stages to build a new fixed plant, due to be finished in the second quarter of 2021. The fixed plant capacity of 750t/hour, with additional capacity and redundancy available from mobile crushing plant will allow the flexibility in supplying a wide range of additional products to meet the customer's needs.

Quality

Truro Quarry employ a dedicated team member to undertake daily production testing of products to ensure products are produced to the customer's specifications. In addition to this, all of Hallett Resources Truro Quarry product compliance and certification testing is carried out by NATA certified laboratories and sampling is carried out by trained and competent testers.

Resources and Geology

In recent years there has been significant development at the quarry to further expand the operating pit and develop new areas of the quarry to take advantage of the stone reserves on site which exceed 200 years. Concept plans have been formulated with the long-term quarry design produced by industry experts to efficiently extract and utilise the known reserves.

Truro Quarry is a Meta - greywacke quarry which is considered to be high strength, hard and durable. Due to the geology of the source rock, the quarry produces products for use in the manufacture of Concrete, Asphalt and Pavements.



**HALLETT
RESOURCES**

CONSTRUCTION SANDS

5. Construction Sands

Hallett Resources Constructions Sand Pit on the Yorke Peninsula produces a naturally occurring sand suitable for concrete, asphalt and other constructions purposes.

Having acquired the sand pit in March 2020, the MSP Group have undertaken a significant investment in the site, including the purchase of state-of-the-art high capacity screening plant and all new HME to ensure reliability in production and service. As part of this investment the site has undergone significant rehabilitation and development to ensure long term supplies.

Quality

Hallett Resources Construction Sands employ a dedicated team member to undertake daily production testing of products to ensure products are produced to the customer's specifications. In addition to this, all of Hallett Resources Construction Sand products compliance and certification testing is carried out by NATA certified laboratories and sampling is carried out by trained and competent testers.

Resources and Geology

The Sand Pit is part of the Yorke Peninsula palaeochannel deposit which formed in a fluvial environment resulting in a clean and consistent deposit. The reserves over the site are estimated in excess of over 90 years giving the MSP Group and its customers confidence in building long term relationships.



**DRY CREEK
RECYCLING**

6. Dry Creek Recycling

Dry Creek Recycling is a business that was established in 2007. Under the EPA license, Dry Creek Recycling is able to receive road profilings and other clean products from both Government and Local Government contacts associated with the Adelaide metropolitan road network system.

The received product is a unique mix of quarry product and asphalt that is sorted, blended and crushed at our boutique plant to meet the required market specifications for base coarse products.

The end result of this process enables Dry Creek Recycling to supply to the broad Adelaide marketplace a range of clean quality products.

Key Attributes

Dry Creek Recycling receive asphalt slabs to <400mm, small concrete <400mm (no neo), road profilings and fine concrete wash-out.

Dry Creek Recycling receive asphalt slabs to <400mm, small concrete <400mm (no neo), road profilings and fine concrete wash-out. Dry Creek Recycling business also stocks Truro Quarry aggregates and Hallett Resources Construction Sands allowing customers to purchase from this site the same products they purchase at the quarry when a quick turn around time is required for quarry materials.



**HALLETT
TRANSPORT**

7. Hallett Transport

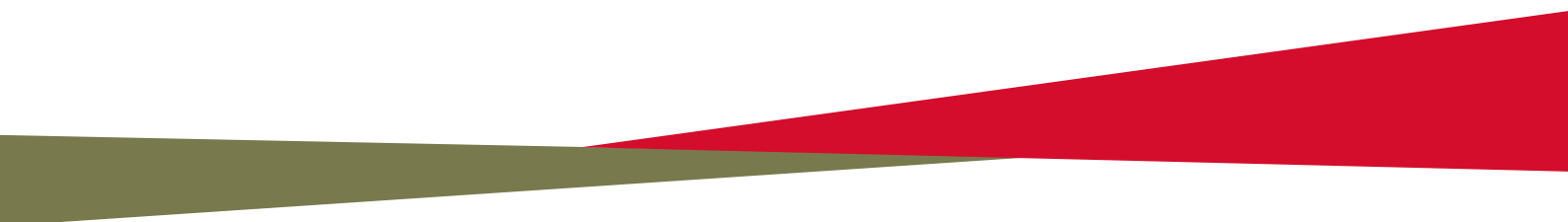
We own and operate over 30 prime movers of various configurations from Tandem Truck and Dogs, Single & Twin Steer 5 axle & 6 axles PBS combinations through to B Double and A Double / Triple Road-trains. We also operate 4 cement powder tankers that can be configured from Tandem Truck and Dogs, Twin Steer 5 axle PBS combinations through to B Double and A Double / Triple Road-trains.

On top of our company owned fleet Hallett has long established reciprocal partnerships with a large number of contract transport providers.

Hallett Transport are a 24/7 operation that services internal and external businesses. This includes:

- Supplying raw materials to Hallett Concrete for its day-to-day operations to all plants
- Delivery of Materials from our three Quarries, Sand Pit and Recycling business direct to our customers
- Partnered with leading bulk powder transport providers for the delivery of Hallett Group's cementitious products to regional locations

Hallett Transport has a highly skilled and experienced team with significant experience of operating in mining and other high regulation environments. We are committed to best practice safety and operate under accredited mass management, fatigue management and COR compliance schemes.



**HALLETT
GROUP**

126 Churchill Road North
Dry Creek SA 5094

hallett.com.au